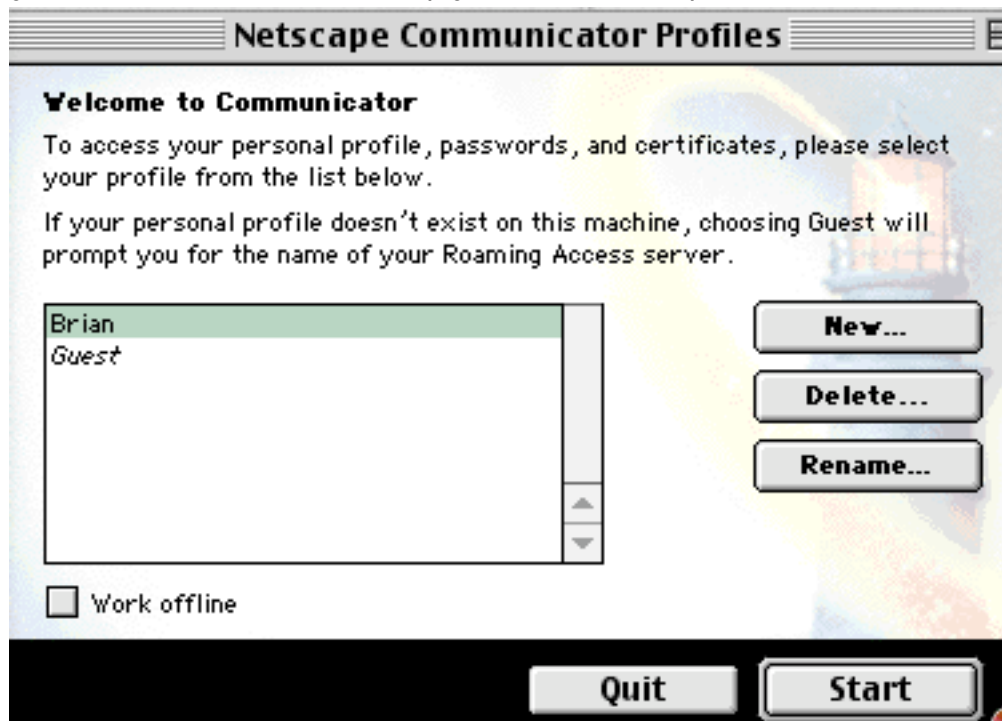


Restoring your old Netscape Profile:

If you have the entire preferences folder that contain all the bookmarks and such, you can locate it anywhere you want. I put mine in the documents folder so it is easy to backup. You can try this if you like and see what happens. It should cause no harm.

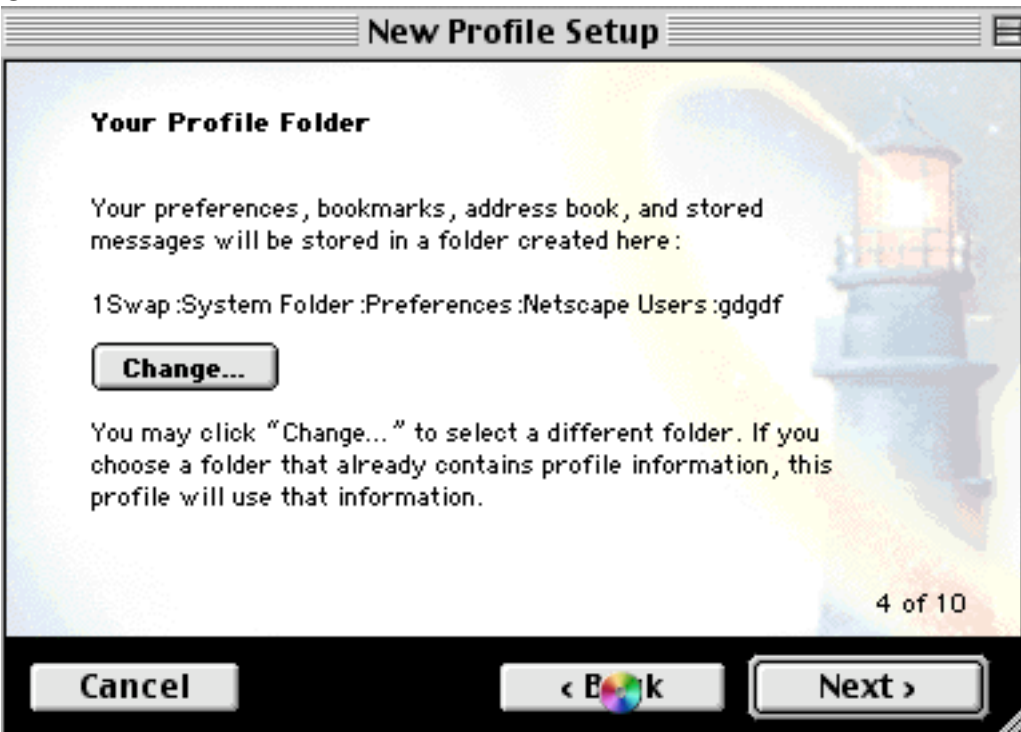
Place your old preferences folder in a location other than where the new one is located. Write down exactly where it is and what the folder name is.

Quit Netscape. Open the folder in which your Netscape application resides. Within that folder you should find something called "User Profile Manager." Double click it and you'll see the same window that you see right after you install a new copy of Netscape.



For the purposes of experimentation, you can tell it to create a new user so that you don't mess with your current

setting. During the procedure it walks you through, you'll get to another window as seen below...



Here is where you click the change button and navigate to the folder containing all your old stuff.

finish answering all the questions until the procedure is complete.

If when you start Netscape, it doesn't ask you which profile you wish to use, quit Netscape and you'll have to click on the "User Profile Manager" again, but this time at the first window, highlight the new user you just created and then click start. If your old bookmarks are there, it works. And if it does work, you may want to run the User Profile Manager thing again and this time delete the profile that takes you to the new stuff.

this works for me. There may be an easier way, but all the shortcuts I've tried, do not work. Good Luck!